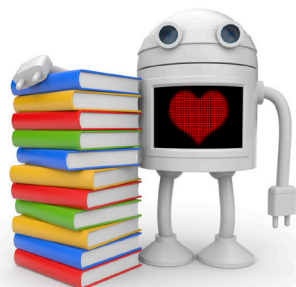


IMPORTANT DATES

8 July Tri 2 Welcome – Mihi Whakatau
15 July Trimester 2 starts
17 July Students' Association Tri2 Sign-up
18 July Applications close for graduation
22 Aug Graduation Ceremony
11 Nov Trimester 3 starts



Enrol for Trimester 2 - Mid-year courses start 15 July!



If you have not enrolled yet - do it now! Classes are filling up quickly, so make sure you have a place. You can access the re-enrolment form here: www.weltec.ac.nz/CONTACTUS/EnrolatWelTec.aspx

If you have enrolled, check that you are enrolled into the correct courses by logging into the results website: <https://results.weltec.ac.nz> Checking is especially important for Diploma and Degree courses with prerequisites. While you are checking your courses, update your contact details so you don't miss out on important information or results notifications.

To change your enrolment, complete a Transfer/Change Enrolment Form as soon as possible. To withdraw, complete a Withdraw Form before the course starts or you may be liable for fees. You can email enrolments@weltec.ac.nz and ask to be withdrawn or both forms can be found here: <http://student.weltec.ac.nz/Pages/FormsandDocuments.aspx>

Need help with your study options?

Our friendly Student Experience Team are available to advise you on everything to do with your study, so please remember to speak to them if you require course information or wish to transfer courses or withdraw. Phone 0800 WELTEC (935 832) or email studentadvisors@weltec.ac.nz



Results



Log into <https://results.weltec.ac.nz> to access your provisional results. Check and update your address while you are there so that your official results are mailed to the correct address.

Your Official Results Notification (previously called Statement of Achievement) is posted automatically once all the results in a programme are approved. This can take up to 6 weeks after the official finish date of your programme.

Orientation – Get study ready!

Orientation is compulsory - it is important that you attend - it is an opportunity to find out more about your programme of study and meet new tutors and classmates. Please check our website www.weltec.ac.nz/orientation/ for further details and to download the Orientation timetable related to your study area. There will be an official Welcome - Mihi Whakatau- held on Monday 8 July at 9am in the Student Hub at the Petone Campus.



Health



WelTec does not have a doctor or nurse on-site, but there are a few low-cost (and in some cases free) healthcare providers available to students. Information on health services for students studying at all WelTec sites, including International students, can be found here: <http://www.weltec.ac.nz/SUPPORTSERVICES/HealthServices/tabid/1188/Default.aspx>

WelTec Student Support

There is a huge range of services available to assist with your studies and general wellbeing while you are a student at WelTec. We can help you, or connect you with people or organisations that are there to support you. Visit us at any campus, phone 0800 WELTEC (935 832) or email studentsupport@weltec.ac.nz

Here are just some of the things we can help you with:

- ✓ Career Advice
- ✓ Financial Hardship
- ✓ Learning Support
- ✓ Maori Student Support
- ✓ Counselling
- ✓ Justice of the Peace
- ✓ Library Services
- ✓ Pacific Student Support

Money – Get Study Ready!

There's no time like the present to get financially sorted. If you're enrolling onto a new course of study for Trimester 2, be sure to get your StudyLink application in as soon as possible and remember to keep StudyLink updated on your enrolment details.



If you need assistance with StudyLink, want to know about your entitlements, or just need general financial guidance or support, WelTec can help. Get in touch with Kim, WelTec's Student Services Officer via the Student Information Centres at all campuses, email studentsupport@weltec.ac.nz or call 0800 WELTEC (935 832). She's a qualified Budget Advisor, so can give you the low down on how to make those pennies go further. She can also assist you with accessing extra help and the Financial Support Fund.

WelTec Students' Association

Tri2 Sign-up - 17th July

Get involved in student life at WelTec. Find out how to join a club or a sports team, find out about the Student Voice at WelTec, learn about Student Job Search, meet people and eat free food! Look out for more details in July at WeltecSA.wordpress.com



Student Reps Make a Difference

Student Reps help other students by being in the loop and knowing how to solve students' problems.

As a new or returning student at WelTec consider getting involved in student representation. You will get training on how to resolve issues, regular updates about what is going on in the student world, and have opportunities to build your CV. Sign up at the Tri2 Sign-up day or drop into the WelTec Students Association on the Ground Floor of T Block, Petone Campus.

Three ways of getting involved

1. Student Reps: get training and support for solving issues for students in their classes
2. Students on boards: Student Reps who act as representatives on WelTec boards and committees
3. Student Council: Student Reps that speak and act on behalf of all WelTec students through a professional board environment.

Become a Student Rep and help others while gaining skills and knowledge that will make you the stand-out candidate for your next job. Find out more at WeltecSA.wordpress.com

WelTec Graduation Ceremony

Applications are now open for students completing qualifications during the first half of 2013.

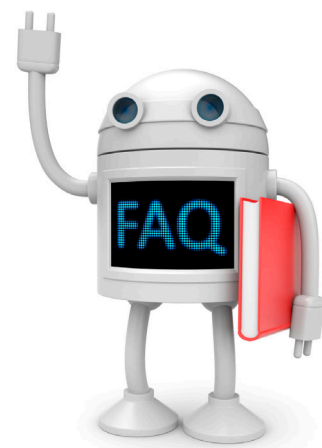
How to apply:

1. Go to www.weltec.ac.nz/graduation
2. Complete the Graduation Ceremony Application Form
(Apply even if you do not have your final results - we will check your eligibility to graduate.)
3. Complete a Graduation Approval Form if you need to (see below)
4. Mail to Graduation, WelTec, Private Bag 39814, Lower Hutt 5045 before 18 July 2013.

Who needs to complete a Graduation Approval Form?

If you are completing a qualification with a tick – you need to complete a form, whether you are attending a ceremony or not. These forms are available from your School.

	Certificate	Diploma	Degree	Postgraduate
Alcohol and Drug Studies	✓	✓	✓	✓
Business	X	✓	-	✓
Counselling	X	✓	✓	✓
Creative Industries	X	✓	✓	X
Exercise Science	✓	✓	-	-
Health Psychology	X	✓	-	-
Hospitality	X	✓	✓	✓
Information Technology	X	✓	✓	✓
Youth Work	✓	✓	✓	-



Event:

22 August 2013 - Starts 7pm
Graduands to arrive by 6.20pm

Where:

Wellington Town Hall
Wakefield Street
Wellington City

Call us on 0800 WELTEC (935 832) if you need further information.